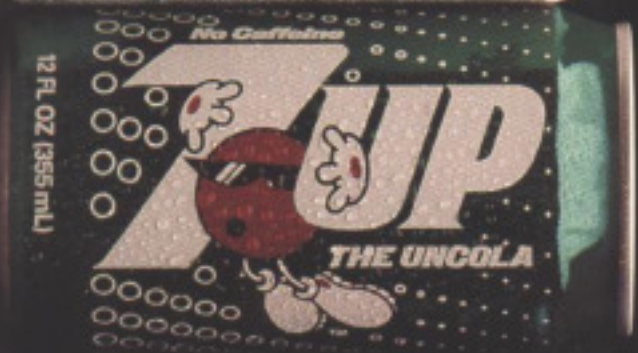
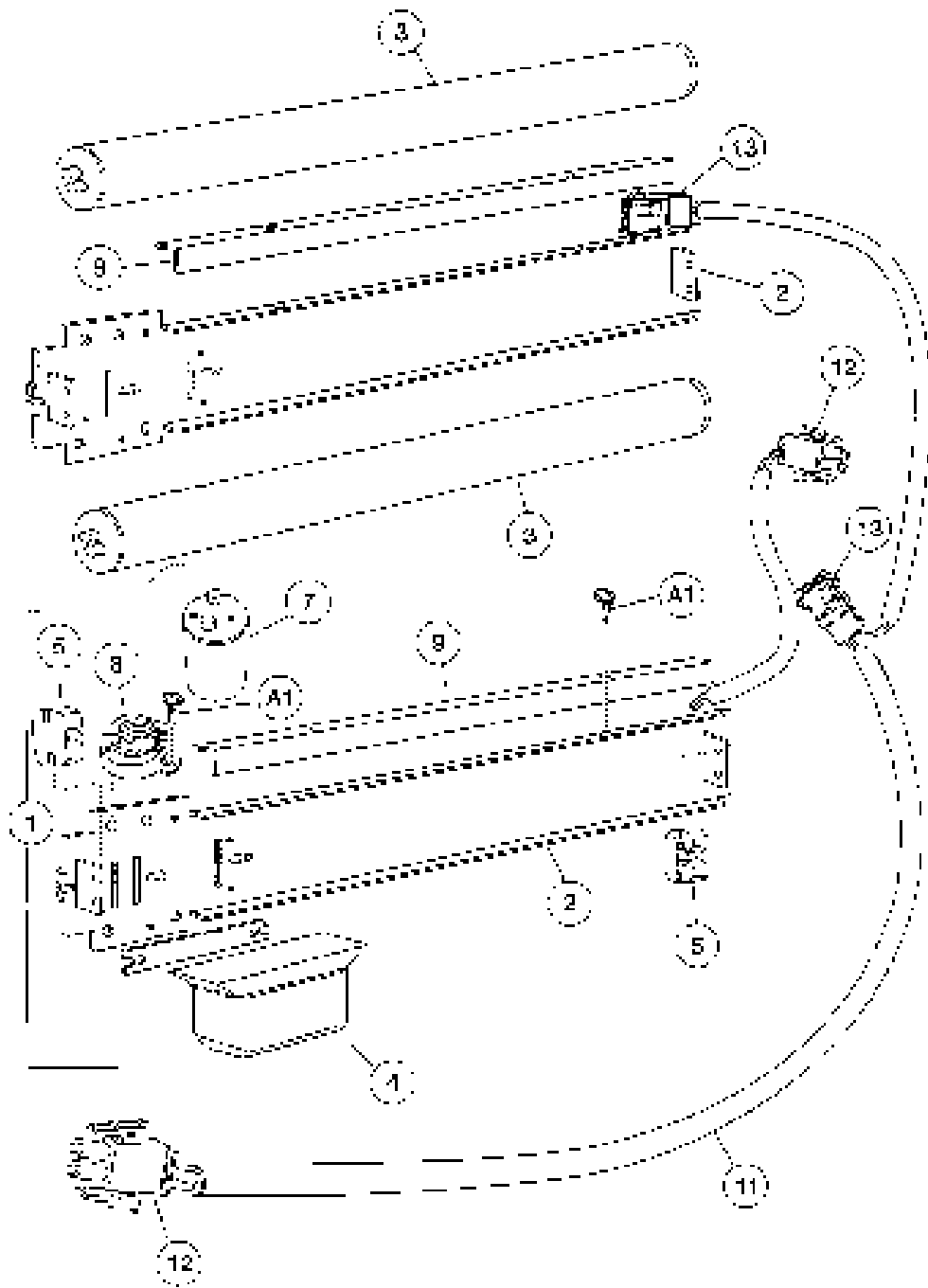


The Parts Book



Can Display



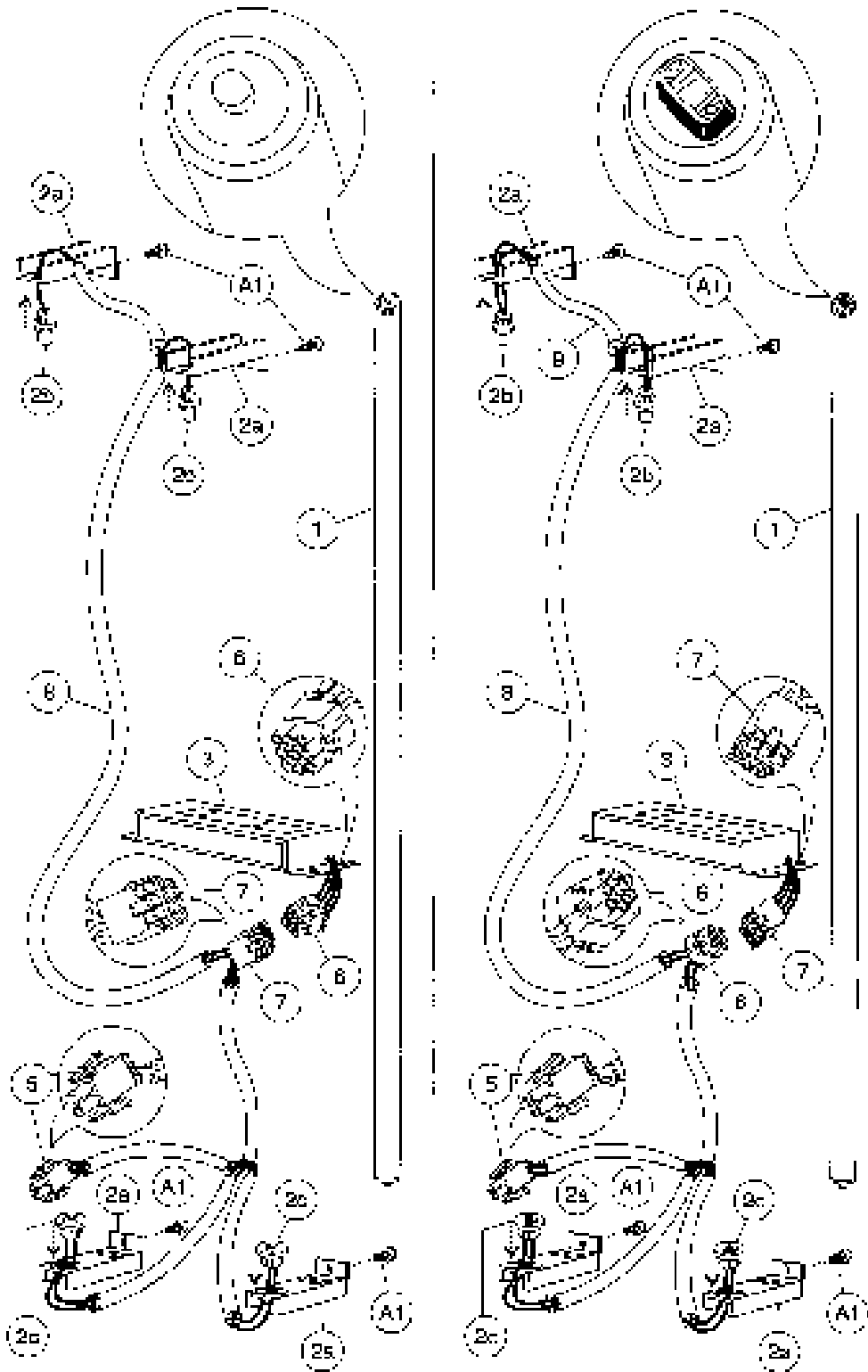
Can Display

Item	Part Number	Part Name And Description By Model Number
1	478,050,800.03	Assembly, Lamp Panel
	440,050,100.03	360/368/501 180
2	478,050,080.03	Lamp Panel
	440,050,050.03	360/368/501 180
3	804,700,050.01	Lamp
	804,700,250.01	F20T120 24" Daylight 20W - 360/368/501 20 Watts F12T8 CW 12" - 180 13 Watts
4	804,400,100.11	Ballast, SP-3 360/368/368/501
5	904,901,200.17	Lamp Holder
		All Models
6	287,050,820.03	Bracket, Lamp Socket All Models
7	904,800,410.07	Starter
		FS-25 - All Models
8	804,908,870.01	Starter Base
		All Models
9	282,050,060.13	Wire Cover
	440,050,070.03	360/368/501 180
10	804,904,550.21	Harness, Light Lead
	804,905,800.01	360/368/501 180
11	804,904,550.31	Jumper, Power Lead All Models
12	804,630,710.01	Two Way Plug (1-480-808-0)
		All Models
13	804,630,700.01	Two Way Cap (1-480-809-0)
		All Models
A1	900,301,700.11	Screw, Phil Pan Swage Form #6 - 32 X 2 1/2"

Cold Drink FL5, Dr Pepper (D3), Generic Round, 7Up (B7), VeryFine/RC Inverted 'L' Circular

SLIMLINE

HIGH OUTPUT



**Cold Drink FLS, Dr Pepper (D3), Generic Round,
7Up (B7), Veryfine/RC Inverted 'L' Circular**

Item	Part Number	Part Name And Description By Model Number
SUMLINE LIGHTING		
1		Fluorescent Bulb
	804.700.310.01	F72T12/DAYLT - 414/432/440/800 58 Watts
	804.700.300.01	F64T12/DAYLT - 278/348/360/368/501 61 Watts
	804.700.330.01	F48 Slimline - 168/180 38 Watts
2a		Door Bracket Lamp Socket
	432.050.380.73	7UP B7, Dr. Pepper D3, Generic Round, Veryfine/RC Inverted 'L'
	562.050.040.03	Cold Drink FLS Only
2b		Top Lamp Holders Slimline
	804.902.020.01	Slimline - 515 All Models
2c		Bottom Lamp Holders
	804.902.030.01	Slimline - 517 All Models
3		Plug-In Ballast
	804.400.370.21	Advance Slimline SM2057 - 278/348/368/414/432/440/501/600
	804.400.390.11	Advance Slimline SM2E40 - 168/180
4		Connector, Electrical (scotchlock 557)
	804.600.520.01	All Models
5		Two Way Plug (1-480-688-0)
	904.600.710.01	All Models
6		Nine Way Plug (1-480-708-0)
	904.600.670.01	All Models
7		Nine Way Cap (1-480-707-0)
	904.600.660.01	All Models
8		Lead, Slimline Output Light Harness (Plug-in ballast)
	804.909.490.01	All Models
HIGH OUTPUT LIGHTING		
1		Fluorescent Bulb
	804.700.360.01	F72T12/D/HC - 414/432/440/600 85 Watts
	804.700.370.01	F64T12/D/HC - 278/348/360/368/501 80 Watts
	804.700.390.01	F48T HC - 168/180 80 Watts
2a		Door Bracket Lamp Socket
	432.050.380.73	7UP B7, Dr. Pepper D3, Generic Round, Veryfine/RC Inverted 'L'
	562.050.040.03	Cold Drink FLS Only
2b		Top Lamp Holders
	804.901.990.01	High Output - 523 All Models
2c		Bottom Lamp Holders
	804.902.000.01	High Output - 524 All Models
3		Plug-In Ballast Advance 4VSN/HC
	804.400.380.11	All Models
4		Connector, Electrical (scotchlock 557)
	804.600.520.01	All Models
5		Two Way Plug (1-480-688-0)
	904.600.710.01	All Models
6		Nine Way Plug (1-480-708-0)
	904.600.670.01	All Models
7		Nine Way Cap (1-480-707-0)
	904.600.660.01	All Models
8		Lead, High Output Light Harness (Plug-in ballast)
	804.909.480.01	All Models
9		Lamp Fixture Jumper, High Output (302890)
	804.904.820.21	All Models
10		Fluorescent Bulb
	804.700.360.21	D7 278 only F13T8CW 13 Watts
A.1	900.201.700.11	Screw, Phil Pan Swage Form #8-32 x3/8"

